



UNIVERSITY OF CALIFORNIA

COOPERATIVE EXTENSION

# Clover Chatter

Sutter and Yuba Counties

142A Garden Hwy., Yuba City 95991 Telephone: (530) 822-7515 Fax: (530) 673-5328

*November 2004*

## Congratulations!

### In This Issue

Congratulations	1
Thank You	1
Arts and Craft Workshop	2
Youth Rabbit Show	2
Shooting Sports Workshop	2
New Leaders Orientations	2
Presentation Day #1	2
Spring Fair Planning Meeting	2
AG Expo	3
Star Rank	3
Citizenship Focus	3
Bi-county Leaders Council	3
Financial Records Still Needed	4
New Year Pins	4
The Spirit Stick	4
Livestock Leaders Symposium	4
State Office News	4
4H Horse Leadership Conference	4
Funding Opportunities/Resources	5
Food For Thought	5
FYI: 4H Information	6

### Happy Thanksgiving

Congratulations to all members and leaders who received an award at Achievement Night for this past year's work. Also, I would like to extend a big thank you to everyone who helped make this night a wonderful event.

If you would like to view a list of the awards and winners from this years Achievement night log on to <http://cesutter.ucdavis.edu> to view recent newsletter, 4H forms, or Achievement Night results; including the judging results of the Club Charter, Secretary's Book, and Treasurers Manuals.

Secretary and Treasurers Manuals are now available to be picked up at the 4H office. Thank you for your patience in this process.

## Thank You

I wanted to say Thank you to everyone who sent their good thoughts and wishes my way during my recent illness. You are all a wonderful group of individuals and I appreciate all your kindness. Thanks Again!

Chris Storm  
4H Program Representative

Isela Valdez  
4-H Youth Development Advisor

"Too often we under estimate the power of a touch, a smile, a kind word, a listening ear, an honest compliment, or the smallest act of caring, all which has the potential to turn a life around".

-Leo Buscaglia

# Coming Events

## **ARTS AND CRAFT WORKSHOP**

Saturday November 13<sup>th</sup>, 2004  
9:00am-1:00pm  
4H office

All 4H members are invited to come make crafts at the fall Arts and Crafts Workshop. For further information, please call the 4H office.

---

## **Placer County 4H Rabbit Coordinating Group**

### **Youth Rabbit Show + Showmanship**

Saturday, December 4<sup>th</sup>, 2004  
Yuba-Sutter Fairgrounds  
Entries Due: November 22<sup>nd</sup>, 2004

For more information call Lee Bastien at (530) 633-9046 or for a show catalog call Nancy Chaussee at (530) 742-9135.

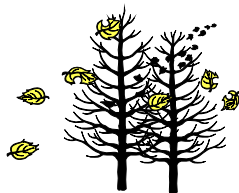
---

## **4H SHOOTING SPORTS WORKSHOP**

December 11<sup>th</sup> and 12<sup>th</sup>  
8:00am-5:00pm each day  
Modesto, CA

Disciplines offered: Black Powder and Rifle

Participants must attend both days to complete the course. Upon successful completion of either course, the participant will be certified to be a shooting sports leader and trainer for her/his county/region. For more information, contact John Borba at (661) 868-6216 or Jim Atherstone at (209) 993-7971.



## **NEW LEADERS ORIENTATION**

There are only 2 new Leaders Certifications sessions left. It is a mandatory requirement for all new leaders who work with members in 4H to complete the Leaders Certification process. This consists of:

1. Completion of the Leader Application
2. Attendance of an Orientation
3. Completion of Fingerprinting/Background check.

This certification is provided by the University of California Cooperative Extension staff. It is not a yearly requirement. If you are enrolled as an adult project leader, a resource leader, transportation leader, etc. you must go through the certification process. The dates of the last two New Leaders Orientations are:

November 15<sup>th</sup>, 2004 at 7pm  
January 8<sup>th</sup>, 2005 at 9am

All orientations are held at the 4H office. If you are planning on attending, please call the 4H office in advance to register.

---

## **PRESENTATION DAY #1**

January 26<sup>th</sup>, 2005  
7pm at the 4H office  
Entry deadline is January 13<sup>th</sup>, 2004

Look for entry forms in this newsletter, Space is limited, so sign up as soon as possible.

---

## **SPRING FAIR PLANNING MEETING**

December 1<sup>st</sup>, 2004  
7pm at the 4H office

If you are interested in helping plan Spring Fair 2005 please plan to attend this meeting.

---

There will be no Clover Chatter in December. Enjoy the Holidays!

## BI-COUNTY COUNCIL UPDATE

### AG EXPO

November 6<sup>th</sup>, 2004

The college of Agricultural Sciences and Technology, California State University, Fresno State's University Business Center

This is a wonderful chance for students to learn more about the various academic departments, laboratory facilities and learning opportunities within the college.

For more information, contact Ann De Lay at 559-278-5088.

---

### Star Rank

The next Star Rank Judging will be on January 11<sup>th</sup>, 2005. Its time to check your Personal Development Form and see if you have enough points to receive a Star. You may receive one star per year. Record Books due into the office by January 11<sup>th</sup>, 2004 by 5pm.

---

### Citizenship Focus 2005

Are you interested in becoming the California Secretary of State or the U.S. Secretary of Agriculture? Or would you just like to be a more active, involved member of your community. Come and learn more about California and see inside Washington, D.C.

Come get involved in this hands on experience with government and community involvement. Applications, with a non-refundable deposit, are due in the California 4H Youth Development Office on January 10<sup>th</sup>, 2005 for Washington Focus and on January 31, 2005 for California Focus. Financial assistance and scholarship opportunities will be available.

For more information, see the flyer in this newsletter, or call the 4H office at 822-7515.

### Quick Updates:

The September 11<sup>th</sup>, 2004 dinner/auction made \$8,679.21. This money will be split between Yuba and Sutter Councils and be used for Awards and summer Camp Session.

The winner of the National 4H Week Display was Sutter Buttes. Jan Quisenberry reported 5 clubs from Sutter County and 4 clubs from Yuba County participated.

4H sign for the office is still in the works.

The camp committee members have accessed camp and needed repairs. The next camp committee meeting is November 4<sup>th</sup>, 2004 at 6pm at the 4H office.

Don't forget the Papa Murphy's pizza fundraiser for the Bi-County Council. Plan to have pizza on November 30<sup>th</sup>, 2004 and December 29<sup>th</sup>, 2004.

Clubs represented at the October Council meeting included: Barry, Dententer, Able Riders, Yuba Hills, Plumas, Arboga, Rocky Hills, Sutter Buttes, Hallwood, Browns Valley, Wheatland, Live Oak, and Pleasant Grove.

**The next Bi-County Council Meeting will be November 4<sup>th</sup>, 2004 at 7pm at the 4H office. There will be no council meeting in December.**



## ANNOUNCEMENTS

### FINANCIAL RECORDS STILL NEEDED!

The following clubs have not complied with the University policies regarding the financial audit and submitting their annual financial reports to the 4H office. You are at risk of losing your club charter. Please turn in 2003/2004 Treasurers Books into the office immediately. If you have questions, please call the office. District 10, Yuba Hills, and East Nicholas.

---

### NEW YEAR PINS

As some of you may have noticed at Achievement Night, the Year Pins have changed. The new pins are done by grades and not by years in 4H. The orange pin is for K to 3<sup>rd</sup> grade, the purple pin is for 4th-5th grade, the blue pin is for 6th-8th grade, and the red pin is for highschool (9th-12th grade).

The office started these pins in the 2002/2003 enrollment year. If 2002/2003 was your first year you got one of the new pins, but if 2002/2003 was the second or more years in 4H members were given a old year pin. This last year 2003/2004 was done the same way except that the second year members were given the new pin and the members in three or more years were given the old year pins. Next year 2004/2005, first thru third year members will get the new style of pins and fourth year members and above will get the old year pins.

I hope that this helps to clarify the year pins for everyone. If you have further questions, please feel free to call the 4H office for more clarification.

### THE SPIRIT STICK

There is a Spirit Stick that will be making its way to clubs this year. To earn the stick your club members need to participate in Bi-County events and other 4H activities. If you have not seen it yet, come to a 4H activity and join the fun. So far the names on the stick are Barry 4H, Dententer 4H, Plumas 4H and Arboga 4H. The Club whose name appears the most will be the spirit winner for the year.

---

### Livestock Leaders & Educators Symposium

Saturday, December 4<sup>th</sup>, 2004

San Joaquin Fair, Stockton, CA

Registration begins at 8:00am

Advanced Admission: \$30 Adults, \$10 Youth

This Hands On event will provide FFA, 4H, and Grange members and Leaders, Educators, Fair staff, and others information that is essential to a successful youth livestock program. For more information please call (209) 466-5041.

---

### STATE OFFICE 4H NEWS

2005-2006 4H State Ambassador applications are now available online. Ambassadors are selected to present at the State Leadership Conference, complete a service project, and represent the California 4H Youth Development Program. Applications are due March 31, 2005. For more information visit

[www.ca4h.org/leadership/ambassador/](http://www.ca4h.org/leadership/ambassador/).

---

### 2005 4H Horse Leadership Conference

February 12-13, 2005

California State University-Fresno

Registration information available November 1<sup>st</sup>, 2004. For more information visit [www.cal4horse.com](http://www.cal4horse.com) or contact Jazz Stables at (530) 754-5809.



GOING...  
GOING...  
GONE!

## 2005 4H Beekeeping Essay Contest

The contest is conducted by The Foundation for the Preservation of Honeybees, Inc. and provides monetary rewards for 4H members. Essays are due February 11, 2005. The rules and guidelines are available at [www.ca4h.org/4hresource/ir/](http://www.ca4h.org/4hresource/ir/).

Do you have anything that you are thinking about selling? Register as a seller on E-Bay and participate in E-Bay's Giving Works program, which offers sellers the option of donating a percentage of the earnings from an item to support a favorite charity. Visit [www.ebay.com](http://www.ebay.com) for more information.

### FUNDING OPPORTUNITIES AND RESOURCES

#### National 4H Salute to Excellence Awards

The National 4H Council is seeking nominations for these awards for 4H volunteers. The California State 4H office will nominate one volunteer for each of the following categories: Volunteer of the Year and Lifetime Achievement. No monetary reward is associated. The deadline to submit an application to the State 4H office is November 30, 2004. More information is available at [www.ca4h.org/4hresource/ir/](http://www.ca4h.org/4hresource/ir/).

#### The Christopher Columbus Awards

This program challenges middle school students to explore opportunities for positive change in their communities. To participate, teams of up to four students and a coach must identify a community issue and use the scientific process to solve it. Applications are due February 14, 2005 and are available at [www.christophercolumbusawards.com](http://www.christophercolumbusawards.com)

#### FamilyFun Volunteers

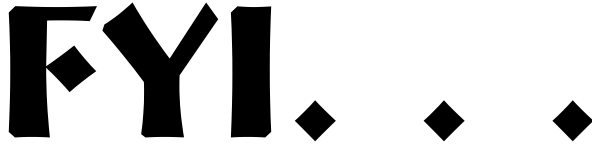
FamilyFun Magazine has announced the launch of FamilyFun Volunteers, a program designed to encourage families to volunteer together. FamilyFun will donate \$5,000 to the charity choices of five families and \$1,000 to the charity choices of 25 families. Application deadline is January 3<sup>rd</sup>, 2005. More information is available at <http://familyfun.com/volunteers>.

### FOOD FOR THOUGHT

A modern staple at most every Thanksgiving table is pumpkin pie. But did you know that it is unlikely that the first Thanksgiving feast included this treat. The supply of flour had long been diminished for the Pilgrims and so there was no bread or pastries of any kind. However, the Pilgrims did eat boiled pumpkin, and they produced a type of fried bread from their corn crop. There was also no milk, cider, potatoes, or butter at the Thanksgiving feast. There was no domestic cattle for dairy products, and the newly discovered potato was still considered by many Europeans to be poisonous. But the first Thanksgiving feast did include fish, berries, watercress, lobster, dried fruit, clams, venison, and plums.

In 1863 President Lincoln proclaimed the last Thursday in November as a national day of Thanksgiving.

# Thanksgiving



## **4-H FAIR ELIGIBILITY POLICY**

The following eligibility rules are for participation of livestock and still exhibit events involving state premium monies (fairs, expositions, etc.)

- Individuals must be enrolled in 4-H as a regular member and in the appropriate project prior to January 1 of the club year.
- Members must attend 80% of the community club meetings.
- Members must attend 80% of the project meetings.
- Members' appropriate project records must be up-to-date before entry forms are signed. Only appropriate project leaders can sign. (Community Leaders may sign with authorization of the project leader.)
- Each member must participate in at least one bi-county/regional event. For example: Presentation Day, Regional Presentation Day, Fashion Revue, Spring Fair, Arts & Crafts Workshops, CSUS Beef, Sheep or Swine Field Day, etc.
- Each member must give one verbal presentation.
  - **First & 2<sup>nd</sup> year members** may give it at least at club or project level.
  - **Third to 5<sup>th</sup> year members** may give it at least at club or county level.
  - **Sixth to 10<sup>th</sup> year members** may give it at county level or be a room coordinator, judge, or master of ceremonies at Presentation Day; Regional Presentation Day.

## **FAIR PROJECT LIMITATIONS**

Project Limitations: 4-H and/or FFA exhibitors may not sell the same type of livestock (beef, swine,

market goats, poultry, rabbits) more than two (2) years consecutively, unless:

1. An exhibitor has a breeding project, grade or purebred.
2. An exhibitor has a commercial project consisting of two (2) or more market animals of the same species—  
One (1) or more for commercial sale or butchered for home use and one (1) for the market Class and Auction.

---

## **OWNERSHIP OF ANIMALS**

**Breeding Animals:** 60 days prior to opening of the fair

**Market Animals:** (sheep, swine and goats): 60 days prior to opening of the fair

**Beef:** 120 days prior to opening day of the fair

**Rabbits:** Does (mothers) of meat pens must have been owned by exhibitor at least 90 days before the meat pen is judged.

**Poultry:** Meat pens must have been owned by exhibitor at least 60 days before meat pens are judged.

---

## **4-H AND FFA POLICIES**

To maintain the fine statewide cooperation that now exists between Cooperative Extension and high school vocational agricultural departments, it is essential that all members, leaders and advisors in both organizations be informed of the joint policy governing projects and enrollment of youth who belong to both 4-H and FFA.

When an individual belongs to both organizations, he or she **must carry a different project in each organization.** When a member maintains both a 4-H and FFA project, the projects may not be in the same kind of livestock or crop.

To be able to show a project at a fair or show, it must be under the supervision of the organization under which it will be shown for no less than 60 days prior to the fair or show; 120 days for market beef.

When a member of either organization exhibits at a fair or show, the preparations of that exhibit, while at the fair or show, is the responsibility of that member.

**Warren D. Reed, State FFA Advisor, State Supervisor, Agricultural, CA Department of**



## 4-H Questions & Answers



### ***IS THERE AN OFFICIAL 4H UNIFORM?***

Yes. It is not required for membership nor for participation in 4H sponsored activities and events.

Youth, however, are encouraged to wear their uniform whenever possible as a symbol of their pride and affiliation with our program.

### ***IS A 4H UNIFORM REQUIRED FOR EXHIBITORS AT FAIRS AND EXPOSITIONS OR AT EVENTS SPONSORED BY OTHER ORGANIZATIONS?***

Yes. 4H members must wear the identifying uniform of the organization they are representing. All California Fairs, and expositions require exhibitors to wear a white 4H uniform.

### ***WHAT IS THE OFFICIAL 4H UNIFORM?***

The official uniform consists of:

**4H Cap** – Kelly green for members through 8<sup>th</sup> grade, White for members 8<sup>th</sup> grade and above.

**Shirt/Blouse** – White blouse or shirt.

**Tie** – Green tie with a 4H emblem.

**Collars** – Girls may wear a 4H collar with 1 3/4" 4H emblem (chevron on the back corners). A metal/plastic ring will fasten the collar points together at the neck.

**Jeans/pants/Slacks** – White or off-white pants. A belt must be worn if there are belt loops.

**Footwear** – Clean black, white or brown shoes or boots.

If a member wears a 4H uniform at a 4H sponsored event or activity, it must be complete or points may be lost. The 4H office has a small 4H store that carries caps, ties, collars (or patterns are available), chevrons, stripes and assorted supplies.

### ***WHICH, WHEN AND WHERE***

Wearing a 4H cap is not a requirement for membership. If a member chooses to wear a cap, the following guidelines should be observed.

### ***GREEN OR WHITE?***

JUNIOR MEMBERS (anyone in 8<sup>th</sup> grade or below) wear the GREEN cap. WHITE caps are worn by any 4H member in 9<sup>th</sup> grade or above.

### ***WHEN TO WEAR THE CAP***

A 4H cap can be worn at 4H meetings, events, public gatherings and in church. A cap is not required for membership nor for participation in 4H sponsored activities and events. Be sure to practice public etiquette.

### **4H Club Hat Etiquette**

#### **What you put on your cap**

**Left Side** – Place the bronze, silver, gold or All-Star, 2" from the front. ONLY the current star rank held may be worn. (The Emerald Star is worn next to the gold star)

Place the junior or teen leaders' emblem behind the star. This is worn ONLY while the member is serving as a junior or teen leader.

Fasten the All-Star pin to the center of the All-Star emblem.

**Right Side** – Place a year pin and stripe for each completed 4H year behind the 4H emblem, with the first year next to the 4H clover.

Junior members (8<sup>th</sup> grade and below) wear a green cap. Year stripes are white on green background. Senior members (9<sup>th</sup> grade and above) wear a white cap. Year stripes are green with a white background. Junior leaders in 7<sup>th</sup> and 8<sup>th</sup> grade use a gold stripe on green background. Junior and teen leaders in 9<sup>th</sup> grade and above use a gold stripe on white background.

Medals received in the California Incentives program may be worn on either side of the cap. No other pins or ribbons are to be worn on the cap at any time. The 4H cap should reflect the dignity of the 4H Youth Program and not be cheapened by fastening every emblem, award, and ribbon won by the member. Do not include buttons on the hat.

# BI-COUNTY PRESENTATION DAYS



**January 26, 2005**  
**7-9 P.M.**  
**4H Office**

**February 23, 2005**  
**7-9 P.M.**  
**4H Office**

**March 12, 2005**  
**9 A.M. - Noon**  
**4H Office**

**May 14, 2005**  
**Spring Fair**  
**Y/S Fairgrounds**

## WHAT IS BI-COUNTY PRESENTATION DAY?

4H presentations are a special sharing time when members show to others the information they have learned and skills they have acquired in their 4H projects. Along with other counties in the North and Central Valley Region, Sutter and Yuba Counties have adopted presentation requirements as a prerequisite for entering any project at the fair. This requirement can be fulfilled by being a presenter, room coordinator, Master of Ceremonies or judge depending on your years in 4H.

Again this year we are offering members 4 opportunities to participate in a Presentation Day. Judged presentations for the 2004-2005 year will begin in January. Members participating in Presentation Days in January, February, or March who receive a Gold or Blue seal will be eligible for Regional Presentation Day at Butte College date to be announced. Members may give presentations at Spring Fair in May also. These presentations WILL BE JUDGED, however, participants will not be eligible for any regional presentations.

The January and February Presentation Days will have limited enrollment of 12 and will be taken on a first-come, first-served basis.

## WHO MAY PARTICIPATE IN BI-COUNTY PRESENTATION DAYS?

Any 4H member in Sutter or Yuba County may give a presentation at Presentation Day. The enclosed entry form must be fully completed, and returned to the 4H office by the due dates listed for each Presentation Day. **Late entries will be rejected.** You will need your 4H Project Leader's signature on the entry.

## WHAT IS A PRESENTATION?

A planned demonstration or illustrated talk that explains or illustrates by using examples. To demonstrate is to teach by showing - learning by doing! Show someone how to tie his shoes, or his 4H tie! Demonstrating is teaching in the clearest and simplest method known. When members are enrolled in 4H, they have expressed a desire to learn. In giving presentations, they share with others their acquired knowledge. One or more persons can give presentations. Younger members gain confidence if they work in pairs.

## WHY GIVE A PRESENTATION?

Presentations help 4H members to: Do and learn-learn and do, develop an ability to speak before a group, share acquired knowledge and skills, develop creativity, gain experience in team work, gain self-confidence, leadership skills and initiative, gain personal recognition, and have a more interesting, active 4H program.

## PERFORMANCE OBJECTIVES OF THE PRESENTATION PROGRAM

The 4H member who makes a presentation will:

1. Be able to give information to at least three people so the majority of the audiences will understand the main points of the presentation.
2. Be able to speak loudly and clearly enough to be heard by the entire audience.
3. Be able to stand and speak before an audience in a friendly and confident manner maintaining appropriate eye contact with the audience during the presentation.
4. Interact with members and leaders in a spirit of friendly cooperation during the development of the presentation.
5. Communicate information and/or demonstrate a skill or technique as an outcome of the presentation and will be able to restate the information and/or repeat that skill three months later.
6. Be able to state the objective of the presentation and present relevant information organized with a recognizable introduction, body and summary.

### WHAT ARE THE RULES?

7. A 4H member may participate in only one Bi-County Presentation Day.
8. A team is composed of two or more members (preferably no more than three).
9. A 4H member may participate in only one presentation at a Bi-County Presentation Day, either as a team or as an individual.
10. Members Kindergarten thru 3<sup>rd</sup> grade enter the Primary Member Division (this is a non-competitive division according to the regional and state policy); 4th-7th grade will be in the Junior Division; 8<sup>th</sup> grade and above will be in the Senior Division.
11. Presentations should be approximately five minutes in length.
12. The subject of the presentation must be from a 4H project or 4H activity in which the member has been or is currently enrolled.
13. Presentations should be well prepared and well rehearsed. They must not be read from notes. **You will be judged down for use of notes.**
14. Junior and Senior divisions are evaluated. Each member will receive a certificate with a gold, blue or red seal depending on the quality of their presentation. Primary members and members who select to enter the non-competitive category will receive certificates of participation.
15. 4H uniforms are strongly recommended. If you do not wear your uniform, be sure to dress neatly.
16. One table and easel in each room will be provided.
- 17.

### WHAT HAPPENS AT PRESENTATION DAYS?

**At the 4H Office -Evening Presentations      Check-in 7:00 pm      Presentations begin 7:15 pm**

18. Check-in at the meeting room, pick up a program and take a seat. Check the program to see where you are in the schedule.
19. The Room Coordinator will call your name. You will be given time to set up your presentation at the front of the room. *No parent help is allowed here.* If you need help moving or setting up your presentation, request it from the Room Coordinators. They are there to help you.
20. Easels will be available for you to set a display on as part of your presentation.
21. There will be three Judges. They will ask you questions about your presentation material once you are finished presenting it. Always repeat the question the Judge has asked you before giving your answer. EXAMPLE: They might ask a presenter giving a talk on rabbits, "What breeds do you raise?" You respond with, "The question was 'What breeds do you raise?' I raise Florida Whites." If there are two or more of you giving the presentation decide beforehand who will answer the first question, second question, etc.
22. After your presentation, clean up your area quickly and quietly. You may sit and watch the other presentations. No one will be allowed to enter or leave during a presentation. The door will be opened between presentations and closed at the beginning of the next presentation.
23. There will be two Room Coordinators. They will be responsible for introducing the presenters and the title of their talk to the Judges and audience. They are also responsible for clean up of their room and bringing the judging sheets to the tally room where they will both help tally and prepare award certificates.
24. Judging will be on the Danish System. The Danish System is judged against a set standard and not against another entry. Scoring will be made on the following categories:  
**Superior - Gold Seal      Very Good - Blue Seal      Good - Red Seal**
25. The Award Ceremony will be held in the meeting room. All presenters will receive a certificate.
26. Presenters receiving a gold or blue certificate may participate at Regional Presentation Day at Butte College. Applications will be available at the **March Presentation Day.**
27. The 4H office will mail to Community Club Leaders a list of all presenters, Room Coordinators, M.C.'s and Judges for official records.

**At the 4H office- March 12, 2005**

**Check-in 9:00 am**

**Presentations begin 9:30 am**

**See instructions above for Evening Presentations at the 4H office. Same guidelines apply.**

**At Spring Fair - May 14****Check-in: 9:30 am****Presentations begin 10:00 am**

28. Enter the Yuba Sutter Fairgrounds through the Livestock gates on Franklin Rd. Follow the 4H signs to the Presentation registration area. Check in, pick up a program, and look for the area in which you will be presenting.
29. Judging will begin at 10:00 a.m.
30. Same as #3 above.
31. Same as #4 above.
32. After your presentation, clean up your area quickly and quietly. You are welcome to sit and watch other presentations, however, please be respectful of presenters and do not move in and out of the area while a presentation is in progress.
33. Same as #6 above.
34. Same as #7 above.
35. The Award Ceremony will be held in the Livestock Area along with Round Robin Winners. All presenters will receive a certificate.
36. Presenters at Spring Fair will **NOT** be eligible for any Regional Presentation Day. **Presenters WILL be eligible to exhibit in the 2005 Yuba-Sutter Fair.**
37. Same as #10 above.

**JUDGES**

Three Judges will be assigned to a room - 2 adult leaders, 1 older member (10<sup>th</sup> grade or older). The job of a judge is to listen and evaluate each presentation, make helpful comments, and award a gold, blue or red seal. Want to be a judge? Sign up on the enclosed registration form. We will send you information and there will be an orientation before the event. The number of assignments for judges is limited and is filled on a first-come, first-served basis. Get yours in **TODAY!**

**ROOM COORDINATORS**

Each room or presentation area will have 2 room coordinators (must be 8<sup>th</sup> grade or older). They will be responsible for introducing and helping the presenters and judges, placing seals on certificates, and organizing awards for the awards ceremony. Room Coordinators are also responsible for the cleanup of their room or area. There will be an orientation before the event begins. Sign up on the registration form. The number of assignments for Room Coordinators is limited and is filled on a first-come, first-served basis. Sign up **NOW!**

**DUE DATES!!!!**

Presentation Day #1 - January 26, 2005. **Entries due by 5:00 p.m. January 13, 2005.**

Presentation Day #2 - February 23, 2005. **Entries due by 5:00 p.m. February 16, 2005**

Presentation Day #3 - March 12, 2005. **Entries due by 5:00 p.m. March 3, 2005.**

Presentation Day #4 - May 14, 2005. **See Spring Fair Entry Deadlines. Use Spring Fair Entry forms**

**BI-COUNTY 4H PRESENTATION DAY**

# ENTRY FORM

Return to the 4H Office 142A Garden Hwy., Yuba City 95991 by the due date listed below:

## USE ONE FORM FOR EACH INDIVIDUAL OR TEAM ENTRY

### Check The Presentation Day You Are Entering:

☐ #1 - January 26, 2005 Due: January 13, 2005  
☐ #2 - February 23, 2005 Due: February 16, 2005  
☐ #3 - March 12, 2005 Due: March 3, 2005

### Check Appropriate Category:

☐ Primary Member (K - 3<sup>rd</sup> grade)  
☐ Junior Member (4<sup>th</sup> - 7<sup>th</sup> grade)  
☐ Senior Member (8<sup>th</sup> grade & above)

### Check One:

☐ Individual Presentation NAME: \_\_\_\_\_  
☐ Team Presentation  
☐ Non-competitive Presentation CLUB: \_\_\_\_\_ PROJECT: \_\_\_\_\_

TITLE OF PRESENTATION: \_\_\_\_\_

TEAM DEMONSTRATIONS: List all names/clubs participating on the back of this entry form.

ARE YOU BRINGING ANY LIVE ANIMALS? Yes ☐ Type: \_\_\_\_\_

4H PROJECT LEADER SIGNATURE: \_\_\_\_\_

FOR OFFICE USE ONLY:

DATE RECEIVED: \_\_\_\_\_ BY: \_\_\_\_\_



## YOUTH MEMBER JUDGE/ROOM COORDINATOR SIGN-UP FORM

Return to the 4H Office 142A Garden Hwy., Yuba City 95991 by the due date listed below:

Check The Presentation Day You Are Signing Up: ☐ Check here if you are a first-time judge/room coordinator.

#1 - January 26, 2005 Due: January 13, 2005  
#2 - February 23, 2005 Due: February 16, 2005  
#3 - March 12, 2005 Due: March 3, 2005

☐ I would like to be a JUDGE. I have earned a GOLD seal at a past COUNTY PRESENTATION DAY and I am currently in the 10<sup>th</sup> grade or older.

☐ I am in the 8<sup>th</sup> grade or older and wish to be a ROOM COORDINATOR.

NAME: \_\_\_\_\_ CLUB: \_\_\_\_\_ GRADE: \_\_\_\_\_

ADDRESS: \_\_\_\_\_ PHONE: \_\_\_\_\_

4H COMMUNITY CLUB LEADER SIGNATURE: \_\_\_\_\_

FOR OFFICE USE ONLY:

DATE RECEIVED: \_\_\_\_\_ BY: \_\_\_\_\_

## ADULT VOLUNTEER SIGN-UP FORM

Please volunteer.

This event needs 2 volunteers each for Presentation Days #1-3 at the 4H Office and approximately 10 volunteers for Presentation Day #4 at Spring Fair.

Return to the 4H Office, 142A Garden Hwy., Yuba City, CA 95991  
by the due date listed below:

**Check The Presentation Day You Are Signing Up:**

\_\_\_ #1 - January 26, 2005 **Due: January 13, 2005**

\_\_\_ #2 - February 23, 2005 **Due: February 16, 2005**

\_\_\_ #3 - March 12, 2005 **Due: March 3, 2005**

**I am willing to act as a:**

\_\_\_ Judge

\_\_\_ Room Monitor

\_\_\_ As Needed

**NAME:** \_\_\_\_\_ **CLUB:** \_\_\_\_\_

**ADDRESS:** \_\_\_\_\_ **PHONE:** \_\_\_\_\_

FOR OFFICE USE ONLY:

DATE RECEIVED: \_\_\_\_\_ BY: \_\_\_\_\_